

## Protein A(Cys)

**Product Number: RPA009**

---

### Shipping and Storage

Freeze dried powder  $-20\pm 5^{\circ}\text{C}$ , avoid repeated freeze-thaw after dissolution.

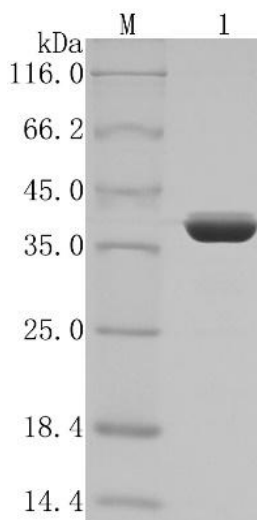
### Components

Component	RPA009-1	RPA009-2	RPA009-3
Protein A(Cys)	1mg	10mg	100mg

### Description

Protein A is a cell wall protein secreted by *Staphylococcus aureus*, also known as Staphylococcal Protein A (SPA). The natural protein A is mainly composed of three functional regions: signal peptide, 5 antibody binding domains, and cell wall peptidoglycan binding domain. The most studied and applied are the 5 antibody binding domains with antibody binding function. Protein A(Cys) selects the antibody binding domain (E-D-A-B-C) from natural protein A for genetic engineering recombinant expression, which has the complete antibody binding function of natural protein A. At the same time, cysteine is added at the end of the amino acid sequence for directional coupling. The thiol groups in cysteine will partially form intermolecular disulfide bonds, forming polymers, which can enhance the binding ability of antibodies.

Name	Protein A(Cys)
Source	<i>Escherichia coli</i>
Molecular weight	34.3kDa
Isoelectric point	5.17
Purity	$\geq 95\%$ (SDS-PAGE)
$A_{280\text{nm}}(1\text{mg/mL})$	0.221
Form	Freeze drying agent, solution before freeze-drying is 5mM PB, pH 7.4
Solubility	Dissolve $\geq 10\text{mg/mL}$ in distilled water
Storage	Freeze dried powder $-20\pm 5^{\circ}\text{C}$ , avoid repeated freeze-thaw after dissolution
Validity period	Three years
Transport	Room temperature or low temperature



M: Protein molecular weight standard

1: Protein A(Cys)

**For Research Use Only**